



Canopies + Walkways

Systems that Shield Occupants From the Elements in Style





Contents

Company Overview	3
-------------------------	----------

Architectural Solutions Team	4
-------------------------------------	----------

Product Overview	5
-------------------------	----------

Canopy Systems	6-9
-----------------------	------------

Briteway® Polycarbonate Canopies	6-7
----------------------------------	-----

Single Source Solutions	8
-------------------------	---

Pre-engineered Options	9
------------------------	---

U-Lite™ Low Slope Polycarbonate Canopies	10-11
--	-------

LiteBrow™ Suspended Polycarbonate Canopies	12-13
--	-------

Liteway™ Fiberglass Reinforced Panel Canopies	14-15
---	-------

Planet Passionate	13
--------------------------	-----------

Kingspan Light + Air reserves the right to modify the design, change or discontinue products without prior written notice. The information contained in this brochure is based on data which are believed to be reliable, but no liability is assumed for any method or manner of use by the purchaser.

Quality Comes to Light

Who We Are

Kingspan Light + Air (KLA) is an award-winning innovator of daylighting solutions for high-performance building envelopes.

We are a pioneer and leader in the daylighting industry, and continually innovate so clients never have to choose between efficiency, style, and safety. We're also focused on sustainability, both in the design and construction of our own systems and through Kingspan's Planet Passionate initiatives.

Our global team of highly-skilled and experienced professionals and extensive manufacturing capability allow us to provide daylighting systems that meet your need and budget. Together, we leverage our knowledge and expertise to serve as daylighting consultants for the architectural community and building industry.

Never Compromise. Always Innovate.

The KLA Advantage

You shouldn't have to compromise your design. We want to enable architects to achieve high levels of building performance without sacrificing aesthetics.

This is why we team up with architects, contractors, and building owners to develop highly versatile daylighting systems. We will work with you from design concept through engineering and installation - and beyond - to ensure performance and quality.

Our expansive lineup of daylighting and natural ventilation solutions provide you with a wide range of system choices that allow us to find the right fit for your project's specific needs. Contact us today to find out how to make your daylighting design dreams a reality.



Start Planning Your Next Project

Kingspan Light + Air is the global leader in daylighting, ventilation, and smoke management solutions for a sustainable built environment. Our translucent walls, skylights, tubular daylighting devices, canopies, walkways, and smoke vents are engineered to optimize the role that natural light and air play in the design of advanced energy-efficient buildings and the health and well-being of their occupants.



Quality Solutions

Now that Kingspan Light & Air, Solatube International and Major Industries, Inc. have joined forces, we offer a full range of standard and custom daylighting solutions built to perform across a wide array of conditions and set a higher standard for the quality and versatility of daylighting technology and integrated design solutions.



Connecting with our Customers

Our ultimate goal is to connect with our customers and serve them on a more personal level. From a dedicated design team to new features on our website that allow for more direct requests for assistance, we want to partner with you from initial design to installation and beyond.



Our Mission

Our newly-formed Architectural Solutions Team serves our clients as their comprehensive project partner. Our team collaborates with you to create exceptional outcomes through the seamless integration of architectural daylighting design assistance, product education and inspiration, and more.



Services Available

- Design Assistance
- Testing and code information
- Technical details
- System performance analysis
- Daylight modeling
- Preliminary structural review

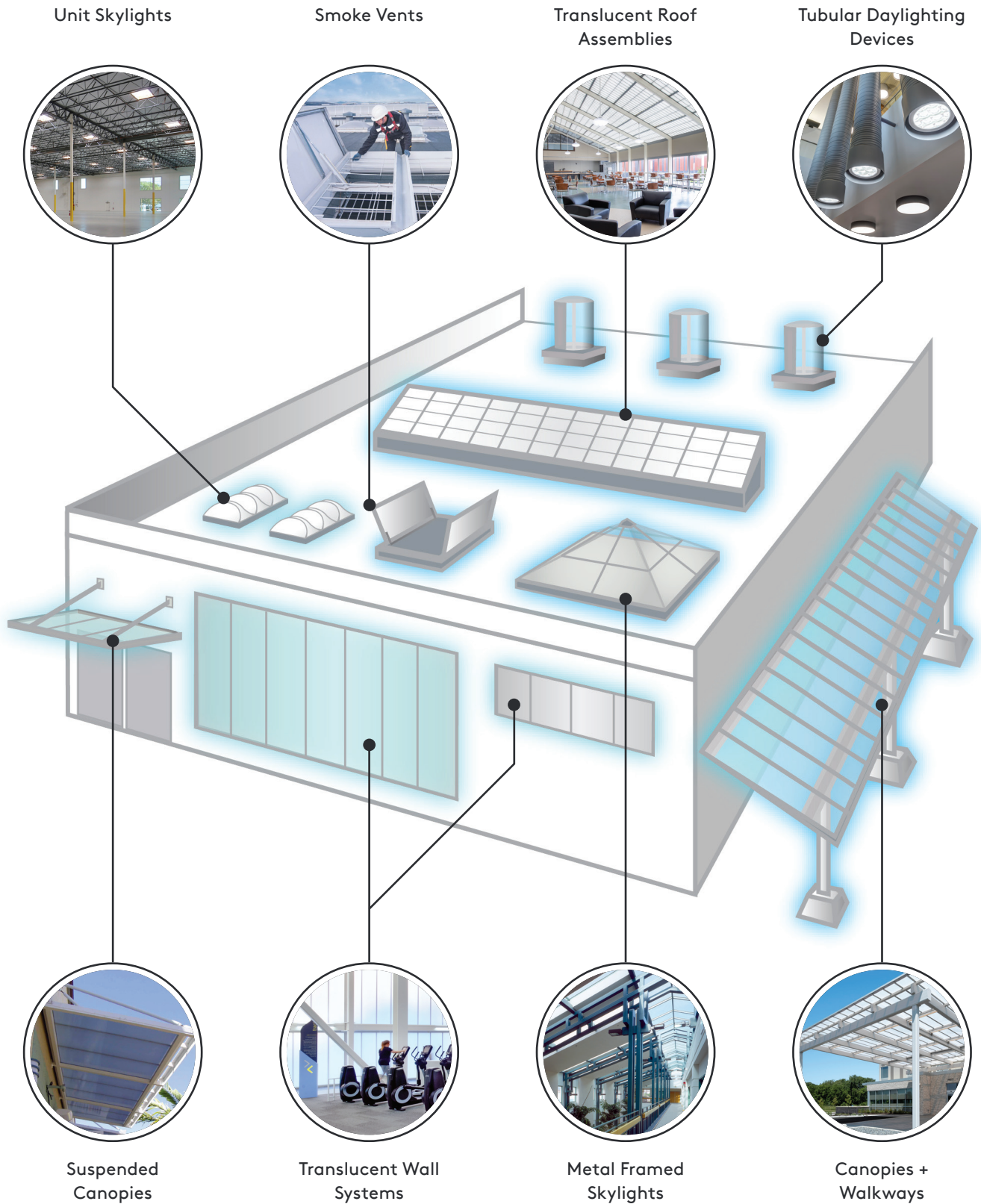


Project Assistance

We are here to help! Your Project Designer is a daylighting industry expert who:

- Assists with product selection and system design
- Helps identify exact daylighting needs for your project
- Models alternate design solutions when needed
- Provides daylighting inspiration packages with images
- Designs solutions with your exact budget and performance goals in mind
- Provides budgetary pricing during conceptual design and design development

Kingspan Light + Air Family of Products



Briteway® Custom Canopies + Walkways

Briteway® canopies and walkways offer shelter and protection for building occupants plus the benefits of diffuse natural light – in a system that’s also cost-effective and easy to install. Whether it’s a simple design or complex custom configuration, Briteway® canopies and walkways feature prefabricated components for reduced labor time, a strong double-tooth standing seam connection for durability, and a wide range of glazing color options to accommodate just about any design need.

Product Highlights:

- Innovative clearspan design that eliminates the need for cross-bracing and opens up the space below the canopy
- Polycarbonate glazing features less weight and more strength and durability than traditional glass solutions
- Standing seam design with double tooth-connection – able to withstand extreme loading
- Tight-cell extrusion for increased durability and enhanced light diffusion
- Co-extruded UV protection integrated within the panel for superior color stability
- Wide variety of standard color options – custom and color matching also available
- Rust-free aluminum structure that offers excellent durability and system longevity
- A single-source solution supplying everything from the ground up
- Components shipped fabricated and ready to assemble
- Overall curved clearspan walkway widths of up to 20 feet
- Wide variety of styles including vaults, ridges and single slope configurations - custom designs also available

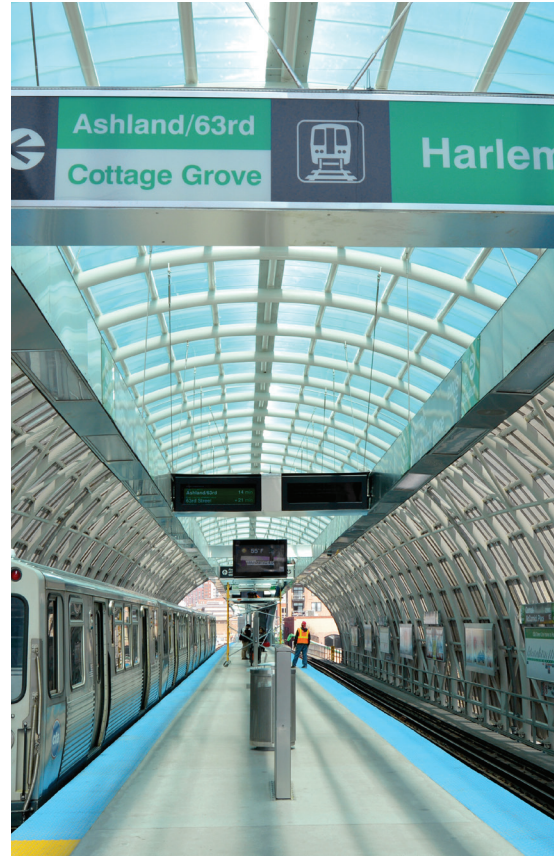




Image by Benny Chan/Fotoworks

We Work With You to Find the Right Canopy or Walkway Solution

We can provide everything from a simple glazing skin system to the design and fabrication of a full structural system, depending on the canopy's configuration and design loads. Your custom canopy might be a simple entrance overhang or perhaps a monumental structure with complex connections. We have experience with every scope of project.

Our Architectural Support team can partner with you and your team to help design the structure and determine the optimal solution for achieving your design goals while maintaining code compliance.

Contact us today to find our more!



Single-Source Solutions

KLA offers you peace of mind by delivering single-source solutions that include preliminary design, engineering, manufacturing, fabrication, and delivery of the system. Having one source helps simplify logistics and ensures consistent quality throughout the entire ordering process.

UV Protection & Color Stability

All of our glazing panels are co-extruded with a specialized UV inhibitor on both sides of the panel, providing the glazing with excellent color stability. An additional coating can be applied for special applications.

Hurricane (HVHZ) Resistance

We offer systems that have been independently tested and certified per HVHZ code requirements and have Florida Product Approval. These systems are extremely durable and are engineered to meet large missile impact resistance, cyclic static air pressure and uniform air pressure requirements per ASTM E-1886 / E-1996 as well as ASTM E-330 / E-331, FBC TAS 201, TAS 202, and TAS 203 for hurricane endurance.

Structure

- Our rust-free aluminum structure offers excellent durability and system longevity
- A variety of standard and custom finish options are available, including both paint and anodized finishes
- The aluminum structure is prefabricated to provide superior quality control and reduce on-site installation times and costs

Longevity

With UV protection and a durable aluminum structure, our systems are designed and built for long-term performance and are backed by a standard 10-year warranty.



Pre-Engineered Systems

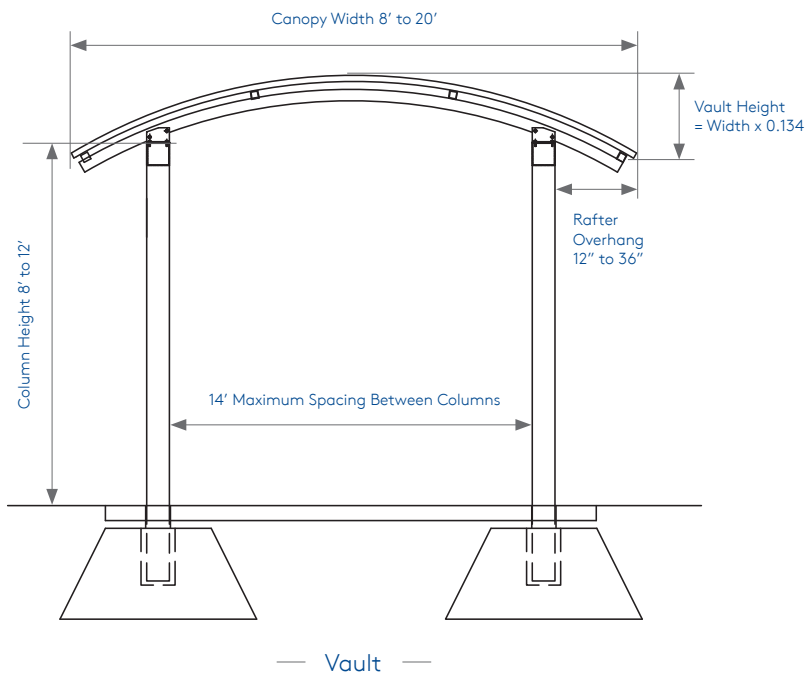
Our clearspan canopy is a standardized system that has been pre-engineered based on specific design criteria to ensure lasting performance. The innovative clearspan design eliminates the need for cross-bracing, which opens up the space below the canopy structure, creating a more comfortable and pleasant environment for pedestrians. These canopies not only provide shelter, but also allow diffused natural light to pass through, resulting in a more vibrant walkway.

Benefits include...

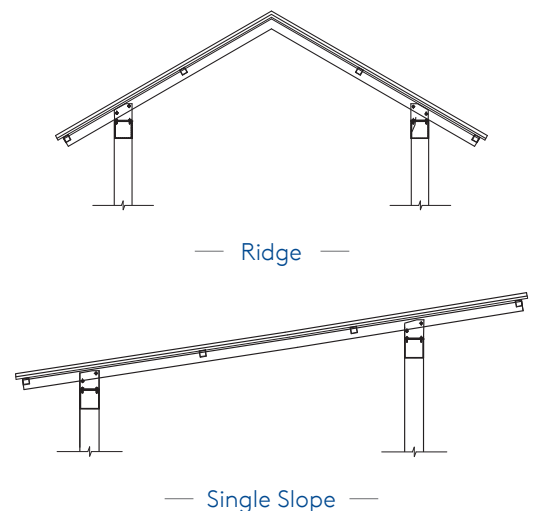
- Design flexibility - a wide range of standard and custom finish colors, a broad selection of glazing colors, and a maximum canopy width of up to 20 ft.
- The rust-free aluminum structure offers excellent durability and system longevity
- KLA is able to provide a single-source solution, supplying everything from the ground up
- Components are shipped fully fabricated and ready to be assembled to ensure superior quality control and simplify the installation process
- No on-site cutting, welding, or painting is necessary, which reduces labor time and installation costs
- Optional gutters and downspouts can be provided by KLA
- Optional Kynar® finish is available with up to a 20-year warranty
- An economical solution that fits your budget



Clearspan Canopy Design Standards



Additional Configurations



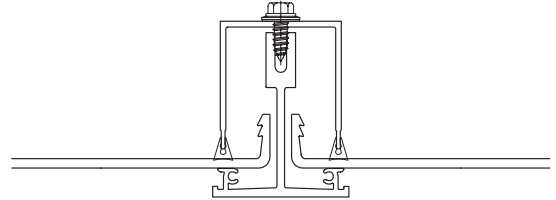
U-Lite™ Canopies

Monolithic Panel System for Low Slope Canopy Applications

Our U-Lite™ system utilizes a monolithic glazing panel, and is designed for, but not limited to, canopies that have a 1/2:12 or greater pitch.

- Glazing panels are extremely durable and are resistant to high-impact
- Aluminum glazing bars enable larger spans, decreasing the amount of substructure needed and increasing savings on material and labor
- Lightweight system for fast, easy installation
- In-house CNC fabrication for superior quality control
- Excellent for low slope applications

Aluminum Glazing Bar



Monolithic Glazing Panel

An Economical Alternative to Glass Canopies

The elegant, slim profile of the glazing panels gives the U-Lite™ system the sleek look offered by glass without the high price tag. Glass systems are often cost prohibitive and require a more complicated installation. The simplicity of the U-Lite™ system and the lightweight nature of the materials enable the system to be installed quickly and with ease. The glazing material is inherently flexible and will not shatter upon high impact. The extreme durability of the U-Lite™ glazing panel helps to ensure the longevity of the system, curbing future costs.



U-Lite™ Canopies

Monolithic Panel System for Low Slope Canopy Applications



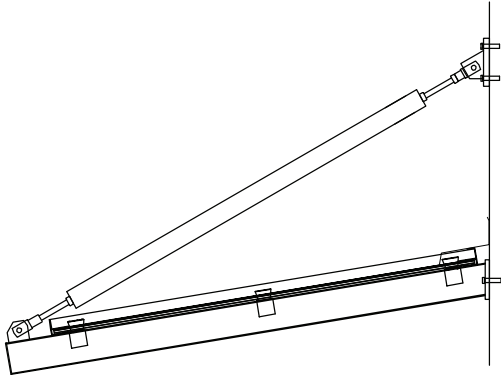
Flexible Design Options to Enhance Your Canopy Design

- Designed without a perimeter frame, resulting in an exposed “floating” edge that gives the system a sleek, contemporary look (optional enclosed edge is available)
- Glazing panels come in a wide range of colors with both translucent and transparent glazing options available, many of which provide a similar appearance to glass
- Can accommodate both standard or flared end designs



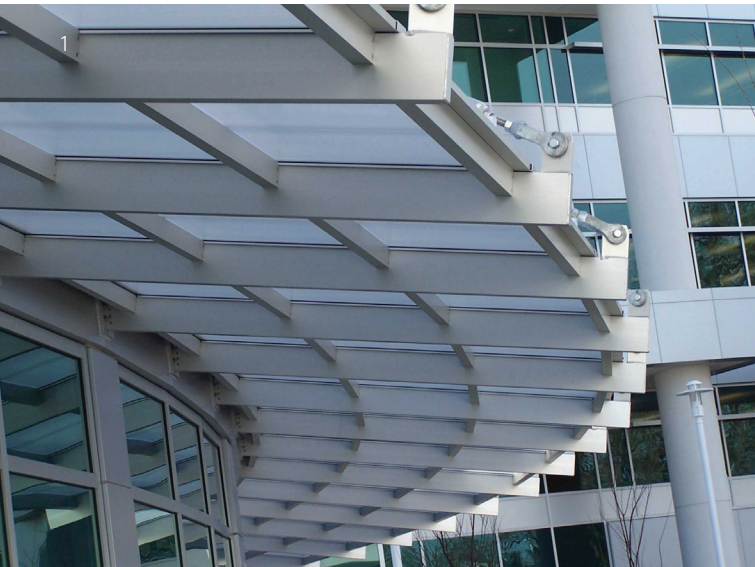
LiteBrow™ Canopies

Suspended Translucent Canopy System



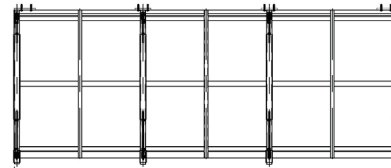
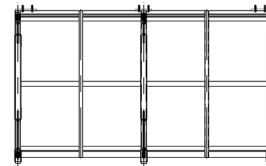
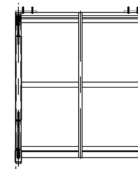
LiteBrow™ is an extremely durable pre-engineered attached canopy system. While these modular canopy units come in three standard sizes, custom-engineered systems are also available.

- Shipped fully-assembled for fast, easy installation
- System can utilize either multi-wall glazing or our monolithic U-Lite™ glazing panels



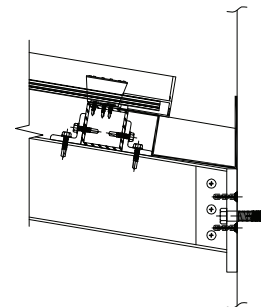
Standard LiteBrow™ Sizes

These canopies are available in 5x4, 5x8, and 5x12 units.



Reverse Incline with Gutter at Wall

Typical units are designed to slope away from the building, but designers have the option to request a reverse incline which includes a gutter at the face of the wall.



LiteBrow™ Canopies

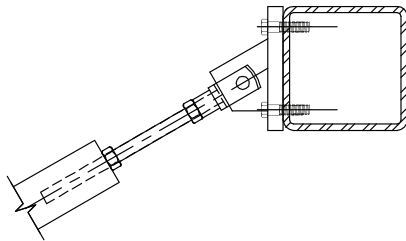
A Sleek Alternative to Awnings and Sun Shades

We have designed a system that not only protects the front entrance of your building, but it also allows glare-free natural light into the adjacent space while limiting solar heat gain, creating a more pleasant and comfortable environment for occupants.

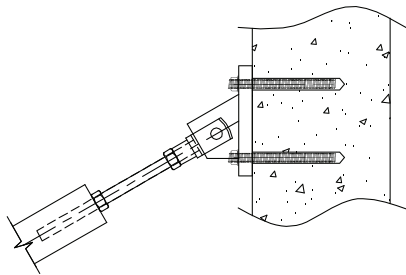
More traditional systems like awnings and sun shades are designed to block out the light, leaving these spaces cast in shadow.

Wall Connections

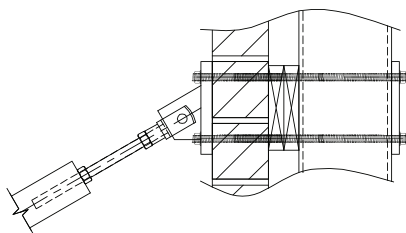
Tie rods must be attached back to a structural component of the wall. Connections and fasteners will vary depending on building material.



Connection to Steel



Connection to Concrete



Connection to Masonry Wall

Our Commitment to Sustainable Design



ENERGY



CARBON



CIRCULARITY



WATER



What is Planet Passionate?

At Kingspan, we want to play our part. We believe advanced materials, building systems and digital technologies hold the key to addressing these issues.

Working in partnership with the industry, and through our new IKON innovation centre in Ireland and our Planet Passionate global sustainability program, we are confident that together we can:

1. Move to a clean energy future
2. Manage the earth's resources more sustainably
3. Protect our natural environment

Planet Passionate is Kingspan's ambitious 10-year global sustainability program which aims to impact three global issues:

- Climate change
- Circularity
- Protection of our natural world

By setting ourselves challenging targets in the areas of energy, carbon, circularity and water, we aim to make significant advances in the sustainability of both our business operations and products.

Learn more about Planet Passionate by visiting <https://www.kingspan.com/us/en/about-us/Planet-Passionate/>.

Liteway™ Canopies

Fiberglass Reinforced Polymer (FRP) Translucent Canopy System

Formerly Guardian 275® canopies from Major Industries, Inc.

From new construction to retrofit applications, Liteway™ fiberglass reinforced polymer (FRP) panel canopies (formerly Guardian 275® from Major Industries, Inc.) are a dependable and cost-effective way to bring glare-free natural light and protection from the elements to your next project. They're engineered and built to be long-lasting, lightweight, and structurally strong.

Liteway™ canopies are a great way to highlight an entryway or define a pick-up and drop-off area while still providing visitors and occupants a bright and welcoming space.

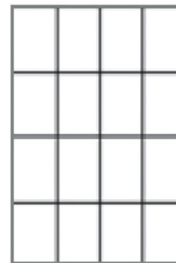


Product Highlights

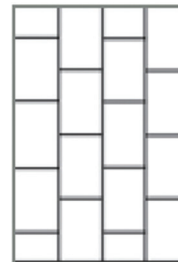
- Numerous configurations available - including ridges, pyramids, single slopes, polygons, barrel vaults and curved systems - plus completely custom designs
- Lightweight system allows for greater design flexibility
- 2-3/4" panels are available in individual panel sizes up to 5' x 20' (dependent upon code requirements - contact us for details)
- A variety of grid sizes and patterns, as well as sheet color options, are available (see page 6 for illustration)
- Mixed glazed systems available - combining translucent panels with glass glazing
- Long warranties - 25 year fiberbloom and up to 20 year color change



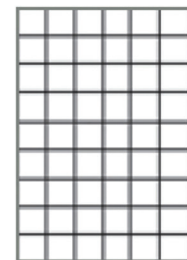
Grid Pattern Options



In-Line Shoji



Staggered Shoji



Tuckerman

Liteway™ Canopies

Sandwich Panel System Benefits

Liteway™ systems are made up of two FRP face sheets supported by an internal aluminum grid core. The sheets provide light control and durability, while the interior grid provides support for the panels and adds to the overall system's strength. With individual glazing panels up to 5 feet wide and 20 feet long (depending on load requirements), Liteway™ panels can reduce the amount of support needed.

- Ultimate Series™ face sheets developed in conjunction with Crane Composites for long life and durability
- Large glazing panels are lightweight and easy to install
- Excellent solar heat gain performance
- Multiple color options including aqua, ice blue, desert rose and custom color matching (contact us for availability)
- Long span capabilities - up to 20' (dependent on local code requirements and loading)
- Numerous finish options and colors
- Colored insulation option for a stained glass-like look



Kingspan Light + Air

North American Headquarters

28662 N. Ballard Dr.
Lake Forest, IL 60045
Toll Free: +1 800 759 6985
T: +1 847 816 1060
F: +1 847 816 0425
E: info@kingspanlightandair.us
www.kingspanlightandair.us



To ensure you are viewing the most recent and accurate product information, please scan the QR code above

Care has been taken to ensure that the contents of this publication are accurate, but Kingspan Limited and its subsidiary companies do not accept responsibility for errors or for information that is found to be misleading. Suggestions for, or description of, the end use or application of products or methods of working are for information only and Kingspan Limited and its subsidiaries accept no liability in respect thereof.

For the product offering in other markets please contact your local sales representative or visit kingspan.com

© Kingspan and the Lion Device are Registered Trademarks of the Kingspan Group plc in the US, Canada and other countries.
© Kingspan Light + Air

MKT-PCB-0003-2403

